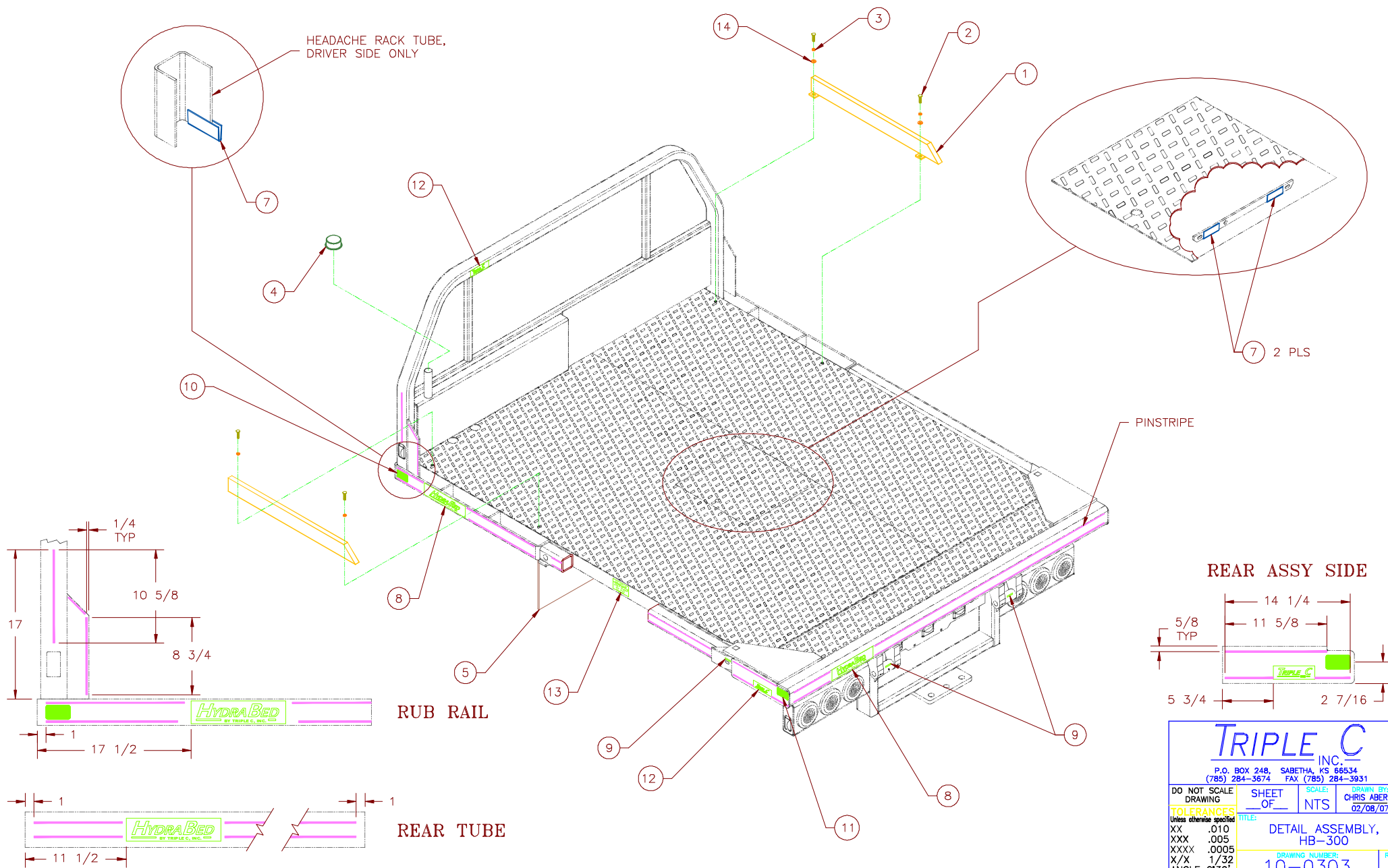


This drawing contains confidential proprietary information of Triple C, Inc. and is subject to return upon request. The furnishing of this drawing is not to be construed as the grant of any license, express or implied, to manufacture, have manufactured, use or sell the structures shown hereon.





CJA 02/08/07

## DETAIL INSTALLATION, HB-300

DRAWING NO.

10-0303

REV.

REF.	QTY	PART NO.	PART DESCRIPTION	COMMENTS
1	1	SUB SIDERAIL199,349	HB199/349 SIDE RAIL (PAIR)	
2	4	BO 3/8X1 HCS	BOLT 3/8 x 1 HCS	
3	4	BO 3/8 LW	LOCK WASHER 3/8	
4	1	MI AWC-5750-03	FILLER CAP	
5	1	MI B2014LSP	MUD FLAP, PLAIN (PAIR)	
6		(NOT USED)		
7	0.5	HD TRIM-LOK-275	TRIM-LOK BLACK	
8	3	LB HYDRA BED	HYDRA BED DECAL	
9	4	LB GREASE	GREASE	
10	2	EL B489A	REFLECTOR, AMBER	
11	2	EL B489R	REFLECTOR, RED	
12	3	LB TRIPLE C	TRIPLE C MFG. DECAL	
13	2	LB CAUTION	STAY CLEAR DECAL	
14	2	BO 3/8 FW	FLAT WASHER 3/8	
15				
16				